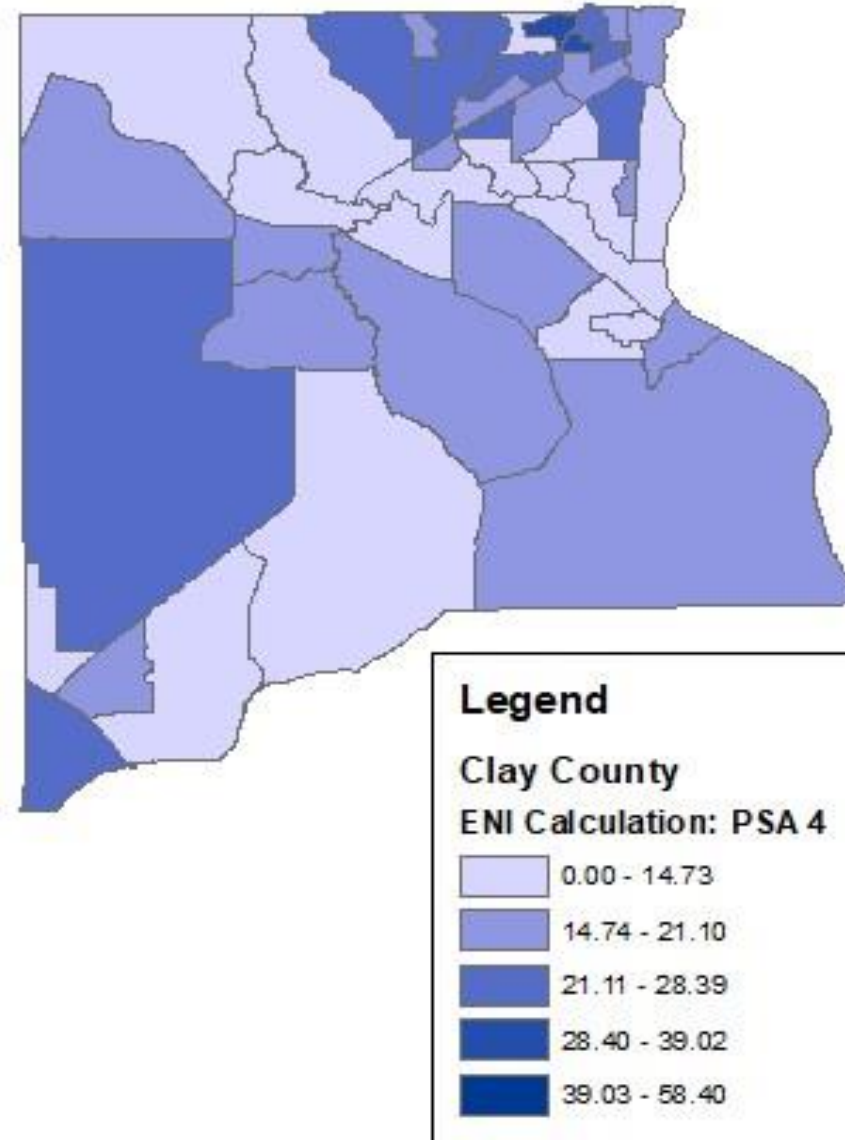


# 2023 Profile of Older Floridians

## Clay County

This profile of older Floridians is a source of current information related to seniors in the county. Topics include the current and future population of older adults, the prevalence of older adults who experience financial and housing issues, the array of health and medical resources, and information related to disasters. As Florida's older adult population grows, awareness of these issues is needed to ensure that elders continue to be vital participants in their communities.

## Elder Needs Index



The Elder Needs Index (ENI) is a measure that includes: (1) the percentage of the 60 and older population that is age 85 and older; (2) the percentage of the 55 and older population that are members of racial or ethnic minority groups; (3) the percentage of the 65 and older population with one or more disability; and (4) the percentage of the 55 and older population living below 125 percent of the Federal Poverty Level. ENI is an averaged score indicating older adults who may need social services within a geographic area. **It is not a percentage of the area's population.** The green areas of the map represent bodies of land such as national parks, state forests, wildlife management areas, and local and private preserves. The blue areas of the map represent bodies of water such as lakes, streams, rivers, and coastlines.

Interactive maps, viewing software, and a detailed user's guide are available at [http://elderaffairs.state.fl.us/doea/eni\\_home.php](http://elderaffairs.state.fl.us/doea/eni_home.php)

The index cutpoints in the ENI is scaled at the PSA-level

Source: Florida Department of Elder Affairs using U.S. Census Bureau, 2016-2020 American Community Survey 5-Year Estimates

## Useful Websites

Bureau of Economic and Business Research (BEBR)  
U.S. Census Bureau, American Community Survey (ACS)  
U.S. Census Bureau, Quick Facts  
Florida Agency for Health Care Administration (AHCA)  
Florida Department of Elder Affairs (DOEA)  
How to Become an Age Friendly Community

Florida Division of Emergency Management (Shelters)  
Florida Housing Data Clearinghouse  
County Chronic Disease Profile  
Aging Integrated Database (AGID)  
Florida DOEA ENI Maps

# 2023 Profile of Older Floridians

## Clay County Demographic Profile

The demographics section presents the population characteristics of those age 60 and older and examines traits about older Floridians, such as the number of veterans, voters, and drivers.

Age Category	Value	Percent
All Ages	223,562	100%
Under 18	53,536	24%
Under 60	172,122	77%
18-59	118,586	53%
60+	51,440	23%
65+	35,578	16%
70+	24,121	11%
75+	14,727	7%
80+	7,943	4%
85+	3,663	2%

Source: BEBR, 2022

Gender	Value	Percent
Male	22,482	44%
Female	26,836	52%

Source: BEBR, 2022

Living Alone	Value	Percent
Male Living Alone	3,035	6%
Female Living Alone	5,115	10%

Source: AGID 2016-20 ACS

Educational Attainment (65+)	Value	Percent
Less than High School	3,975	11%
High School Diploma	17,435	49%
Some College, No Degree	9,130	26%
Associates Degree or Higher	15,890	45%

Source: U.S. Census Bureau, 2016-2020 ACS

Marital Status	Male	Female
<b>Never Married</b>	440	830
Percentage Never Married	2%	3%
<b>Married</b>	17,520	14,050
Percentage Married	78%	55%
<b>Widowed</b>	1,905	6,090
Percentage Widowed	9%	24%
<b>Divorced</b>	2,545	4,445
Percentage Divorced	11%	17%

Source: AGID 2016-20 ACS

**Note: The American Community Survey (ACS) requires a minimum of 50 cases in a geographic area and therefore a value of 0 may denote fewer than 50 seniors in a region.**

Race and Ethnicity	Value	Percent
White	42,893	83%
Black	4,299	8%
Other Minorities	2,126	4%
<b>Total Hispanic</b>	3,091	6%
White Hispanic	2,652	5%
Non-White Hispanic	439	1%
Total Non-Hispanic	48,349	94%
Total Minority	9,516	18%

The minority population is the summation of black, other, and Hispanic

Source: BEBR, 2022

Driver License Holders	Value	Percent
Drivers	53,953	29%

Source: Florida Department of Highway Safety and Motor Vehicles, 2023

Registered Voters	Value	Percent
Registered Voters	55,773	32%

Source: Florida Department of State, 2023

Veterans	Value	Percent
Age 45-64	10,036	50%
Age 65-84	8,905	44%
Age 85+	1,241	6%

Source: U.S. Department of Veterans Affairs, 2020

Grandparents	Value	Percent
<b>Living With Grandchildren</b>	3,360	7%
Grandparent Responsible for Grandchildren	805	2%
Grandparent Not Responsible for Grandchildren	2,555	5%
<b>Not Living With Grandchildren</b>	43,765	85%

Grandchildren are defined as being under the age of 18.

Source: AGID 2016-20 ACS

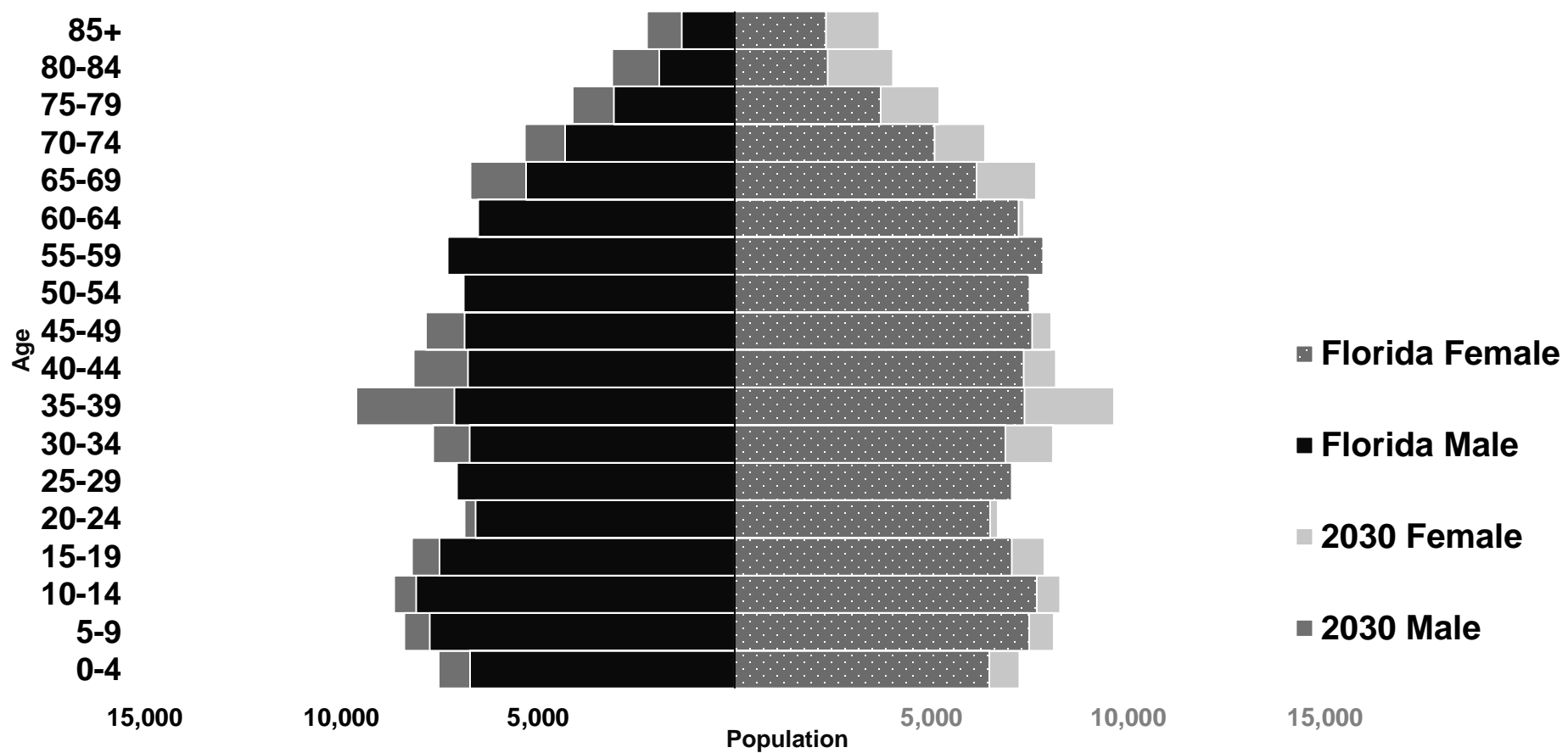
English Proficiency	Value	Percent
With Limited English Proficiency	760	1%

Source: AGID 2016-20 ACS

# 2023 Profile of Older Floridians

## Clay County Demographic Profile

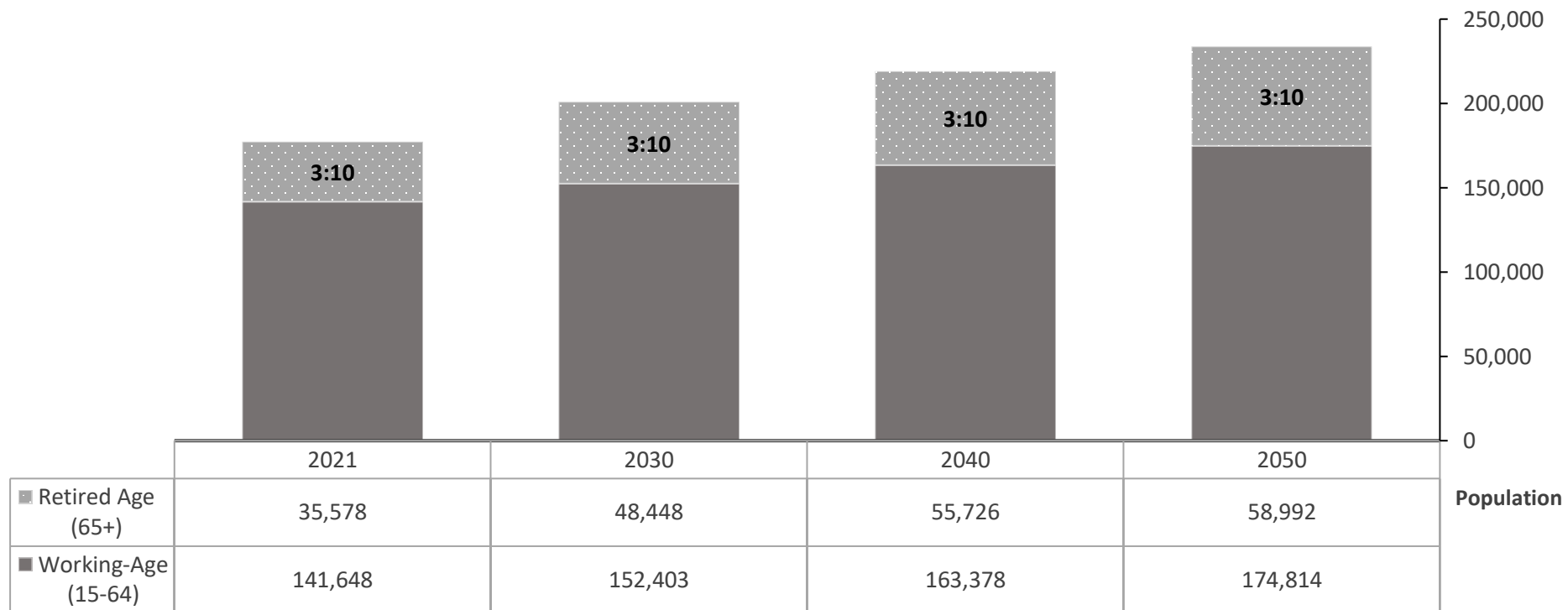
The population pyramid below compares the projected older adult population by gender between 2021 and 2030, demonstrating the changes expected in the next decade. As a whole, Florida is expected to experience population growth, with some areas expecting notable growth in the proportion of those age 65 and older.



Source: BEBR, 2022

## Older Adult Dependency Ratio

The dependency ratio contrasts the number of working-age (15-64) individuals compared to the number of individuals age 65 and older who are likely retired from the workforce. This ratio reflects the ongoing contributions of taxes and wages to support the health care and retirement systems used by retirees, as well as the availability of younger individuals to serve as caregivers to older loved ones.



Source: BEBR, 2022

■ Working-Age (15-64) ■ Retired Age (65+)

# 2023 Profile of Older Floridians

## Clay County Financial Profile

This section examines financial conditions, poverty rates, and the cost of living for older Floridians. The ratio of income to poverty level graphic below shows the distribution of older adults relative to the poverty level to show the proportion of the senior population who fall below the Federal Poverty Level (FPL). The portrayal of the financial conditions of older adults is detailed in the final graphic, which includes information about income relative to rates of homeownership and partnership status in the consideration of cost of living.

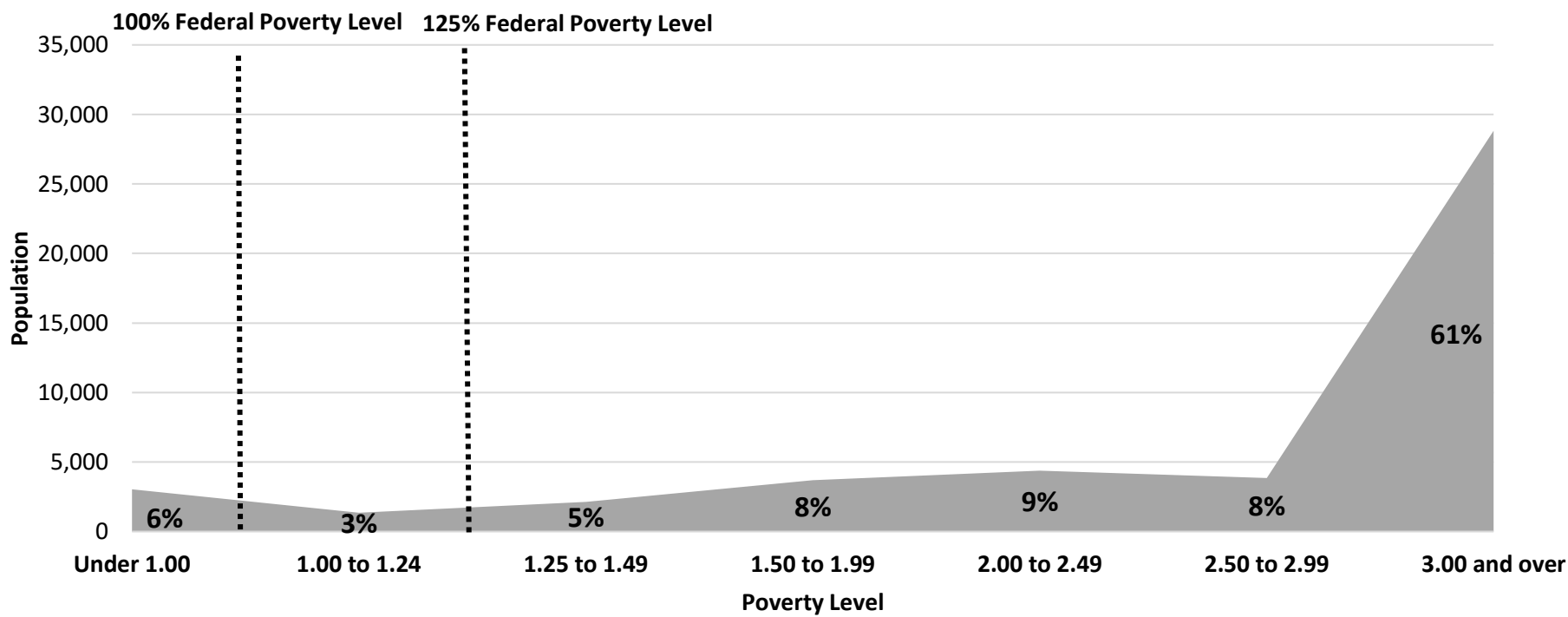
Federal Poverty Level	Value
Single-Person Household	\$13,590
Two-Person Household	\$18,310
125% Single-Person Household	\$16,988
125% Two-Person Household	\$22,888

Source: U.S. Department of Health & Human Services, 2023

Poverty	Value	Percent
At Poverty Level	3,040	6%
Below 125% of Poverty Level	4,380	9%
Minority At Poverty Level	970	2%
Minority Below 125% of Poverty Level	1,420	3%

Source: AGID 2016-20 ACS

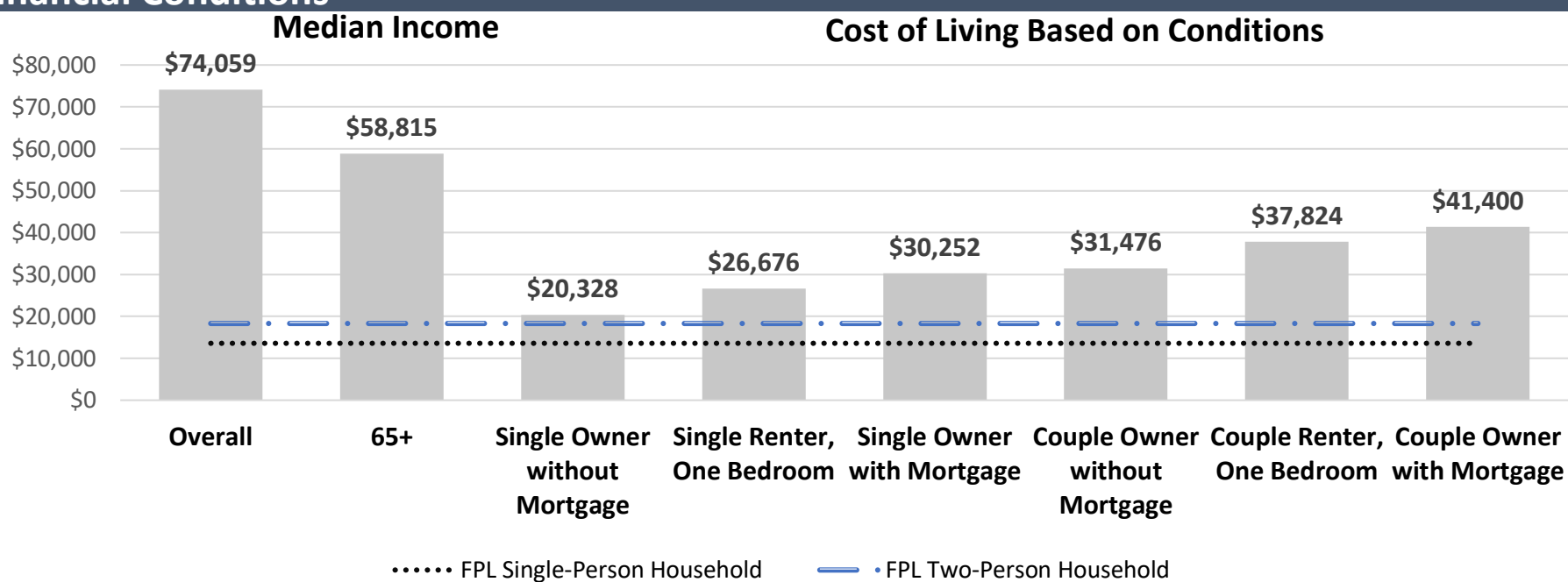
## Ratio of Income to Poverty Level



Value is expressed as the percentage of the 60+ population, with the dotted lines representing the Federal Poverty Level.

Source: AGID 2016-20 ACS

## Financial Conditions



Cost of living is an index of how much income retired older adults require to meet their basic needs to live in their community without assistance.

Source: U.S. Census Bureau, 2017-2021 ACS, AGID 2016-20 ACS, and Elder Index. (2022). The Elder Index™ [Public Dataset]. Boston, MA: Gerontology Institute, University of Massachusetts

# 2023 Profile of Older Floridians

## Clay County Livability Profile

The livability section presents new elements, such as available affordable housing for older adults. Many essential community elements are also included below, such as sidewalk safety, the safety of roadways, and availability of green spaces. The rates of older Floridians who have access to a vehicle or public transportation, as well as the availability of internet access and various food resources, are also provided. These provide estimates of older adults' ability to access community resources.

Pedestrian Safety	Percent
Sidewalks with Barriers	30%
Physical barriers are those that separate motorized vehicle lanes from sidewalks or shared path (e.g. areas for parking lots, guardrail, trees, etc.).	
Source: Florida Department of Transportation, 2023	

Road Incidents	Value
Total Involved in Fatal Car Crashes per 100,000	21
This figure includes occupants and non-occupants involved in a crash.	
Source: Florida Department of Highway Safety and Motor Vehicles, 2023	

Internet Access (65+)	Percent
Have Internet Access	93%
Source: U.S. Census Bureau, 2016-2020 ACS	

Food Resource Centers	Value
SNAP Access Sites	1
Fresh Access Bucks Outlet	1
Farmer's Market	1
Food Distribution (No Cost)	7
SNAP Retailers	137
Congregate Meal Sites	4
Food Distribution (No Cost) is the number of food pantries, soup kitchens, and food banks in the area.	
Source: Feeding Florida.org, USDA, 2023, FDACS, 2023, and Florida DOEA, 2022	

Public Transportation Options	Value
Bus Operations at least at the County	1
Rail Operations at least at the County	0
Public Transit Service Area (sq. mi.)	246
Public Transit Service Area Population	223,106
Annual Unlinked Trips	1,022,007
Vehicles Operated in Maximum Service (VOMS)	227
Total Miles of Bike Lanes	49
Information on service area is not reported by rural and intercity public transit.	
VOMS are the number of vehicles operated to meet the annual max service, and unlinked trips are the number of passengers boarding public transit.	
Source: Federal Transit Administration, 2021, and FDOT, 2022-2023	

Green Space	Value
Number of Nearby State Parks	1
Nearby refers to the park that has the shortest distance from the center of the county.	
Source: Florida Department of Environmental Protection, 2023	

Rural-Urban Designation	Value
Census Tracts Rural	0%
Census Tracts Urban	100%
Number of Census Tracts	30
Source: U.S. Department of Agriculture, 2019	

Households With High Cost Burden (65+)	Value
Owner-Occupied Households	6,830
Percent of Owners with High Cost Burden	25%
Renter-Occupied Households	4,480
Percent of Renters with High Cost Burden	33%
Households with a high cost burden have occupants age 65+ paying more than 30% of income for housing costs and having an income below 50% of the area median income.	
Source: The Shimberg Center for Housing Studies, 2021	

Affordable Housing Inventory	Value
<b>Properties</b>	4
Properties Ready for Occupancy	4
<b>Total Units</b>	293
Units with Rent and/or Income Restrictions	293
Units Receiving Monthly Rental Assistance	94
Affordable housing inventory receives funding from HUD, Florida Housing Financing Corp., and the USDA. The inventory above includes older adults as its target population.	
Source: The Shimberg Center for Housing Studies, 2022-2023	

Housing Units by Occupancy (65+)	Percent
Owner-Occupied Housing Units	41%
Renter-Occupied Housing Units	20%
Source: U.S. Census Bureau, 2016-2020 ACS	

Vehicle Access (65+)	Percent
Owner-Occupied Households with Access to Vehicle(s)	97%
Renter-Occupied Households with Access to Vehicle(s)	84%
Source: U.S. Census Bureau, 2016-2020 ACS	

Employment Status (65+)	Value	Percent
Number of Seniors Employed	23,293	65%
Number of Seniors Unemployed	729	2%
Source: U.S. Census Bureau, 2016-2020 ACS		

Retirement (65+)	Value	Percent
Social Security Beneficiaries	36,300	76%
SSI Recipients	568	18%
SSI stands for Supplemental Security Income. To qualify, a person must be at least age 65 OR be blind or disabled. Also, the person must have limited income and resources.		
Source: U.S. Social Security Administration, 2021		

SNAP or Food Stamps	Value
<b>Potentially Eligible</b>	4,380
Annual Participants	3,856
Current Beneficiaries as of Dec-22	2,899
Percent of Total Population Receiving Benefits	6%
Potentially Eligible are individuals below 125% of the Federal Poverty Level	
Source: Florida Department of Children and Families, 2022	

# 2023 Profile of Older Floridians

## Clay County Health Profile and Medical Resources

The health and medical section presents the variety and availability of different types of facilities, medical professionals, and treatment services in the community. This includes complex estimates based on probable usage by older adults. For example, the "Medically Underserved" are areas designated by the U.S. Department of Health and Human Services as having too few primary care providers, high infant mortality, high poverty, or a high elderly population. Medical access and health support services information is an important area for community planners to ensure that support is in place to accommodate an older population.

Ambulatory Surgical Centers	Value
Facilities	7
Operating Rooms	22
Recovery Beds	64

Source: Florida AHCA, 2023

Hospitals	Value
<b>Hospitals</b>	4
Hospitals with Skilled Nursing Units	0
<b>Hospital Beds</b>	672
Skilled Nursing Unit Beds	0

Source: Florida AHCA, 2023

Medical Professionals	Value
<b>Medical Doctors</b>	
Licensed	343
Limited License	1
Critical Need Area License	10
Restricted	0
Medical Faculty Certification	1
Public Health Certificate	0
<b>Other Professionals</b>	
Licensed Podiatric Physicians	15
Licensed Osteopathic Physicians	86
Dentists	105
<b>Licensed Registered Nurses</b>	4,264
<b>Pharmacies</b>	49

Source: Florida Department of Health, 2023

Assisted Living Facility	Value
<b>Total ALF Beds</b>	750
Optional State Supplementation (OSS) Beds	0
Non-OSS Beds	750
<b>Total ALF Facilities</b>	14
Facilities with Extended Congregate Care License	2
Facilities with Limited Mental Health License	0
Facilities with Limited Nursing Service License	4

Source: Florida AHCA, 2023

Medically Underserved	Value	Percent
<b>Total Medically Underserved</b>	0	0%
Living in Areas Defined as Having Medically Underserved Populations	0	0%
Living in Medically Underserved Areas	0	0%

Source: Calculated using U.S. Health Resources & Services Administration and AGID

Health Insurance 65+	Value	Percent
Insured	33,755	95%
Uninsured	124	5%

Source: U.S. Census Bureau, 2017-2021 ACS

Disability Status	Value	Percent
With One Type of Disability	5,620	11%
With Two or More Disabilities	6,290	12%
<b>Total With Any Disability</b>		
Hearing	4,990	10%
Vision	2,115	4%
Cognitive	3,850	7%
Ambulatory	9,995	19%
Self-Care	2,790	5%
Independent Living	4,890	10%
With No Disabilities	21,969	43%
Probable Alzheimer's Cases (65+)	3,504	10%

Source: U.S. Census Bureau, 2017-2021 ACS, AGID 2016-20 ACS

Medicaid & Medicare Beneficiaries	Value	Percent
60+ Medicaid Eligible	4,924	10%
60+ Dual Eligible	4,265	70%

Source: Florida AHCA, 2023

Adult Day Care (ADC)	Value
ADC Facilities	1
Capacity	35

Source: Florida AHCA, 2023

Home Health Agencies	Value
<b>Agencies</b>	13
Medicaid Certified Agencies	0
Medicare Certified Agencies	5
Homemaker and Companion Service Companies	30

Source: Florida AHCA, 2023

# 2023 Profile of Older Floridians

## Clay County Health Profile and Medical Resources

Skilled Nursing Facility (SNF) Use	Value
<b>SNFs With Beds</b>	11
Community Beds	11
Sheltered Beds	1
Veterans Administration Beds	0
Other Beds	0
<b>SNF Beds</b>	1,260
Community Beds	1,260
Sheltered Beds	50
Veterans Administration Beds	0
Other Beds	0
<b>SNFs With Community Beds</b>	11
Community Bed Days	456,250
Community Patient Days	358,518
Medicaid Patient Days	209,098
Occupancy Rate	79%
Percent Medicaid	58%

The day the patient is admitted is a patient day. A bed day is a day during which a person is confined to a bed and in which the patient stays overnight in a hospital.

Source: Florida AHCA, 2023

Emergency Medical Services (EMS) Providers	Value
Providers	2

EMS providers include air ambulances and ambulances with Basic Life Support (BLS) or Advanced Life Support (ALS).

Source: Florida Department of Health, 2023

Adult Family Care Homes	Value
Homes	2
Beds	10

Source: Florida AHCA, 2023

Memory Disorder Clinics	Value
Total	0

Source: Florida DOEA's Summary of Programs and Services (SOPS), 2022

Dialysis	Value
End-Stage Renal Disease Centers	7

Source: Florida AHCA, 2023

## Clay County Disaster Preparedness

The disaster preparedness section presents the count and percentage of people age 60 or older living in the legislative district that fall within particular storm surge evacuation zones, as well as the number of DOEA Home and Community-Based Services (HCBS) clients who reside in these zones. The estimate of electricity-dependent individuals is presented by insurance type to show the number of people who use electricity-dependent medical equipment necessary for things such as survival or mobility. This information can also be used to evaluate the sufficiency of shelters, generators, and evacuation route roadways to handle the needs of seniors and medically fragile adults in emergencies.

Electricity-Dependent	Value
Medicare Beneficiary	2,271
Medicaid Beneficiary	66

Medicare beneficiary includes the entire Medicare population (65+ and SSI Recipients).

Medicaid beneficiaries are individuals age 60 to 64.

Source: Florida AHCA, U.S. Centers for Medicare & Medicaid Services, 2022, and U.S. Department of Health & Source: FDEM, 2022

Shelter Resources	Value
<b>Number of General Shelters</b>	24
General Shelter Max Capacity in People	9,939
<b>Number of Special Needs Shelters</b>	2
Special Needs Shelters Max Capacity in People	369

Evacuation Zones	Value	Percent
<b>DOEA HCBS Clients Residing in Evac Zone:</b>	168	0%
Zone A	16	0%
Zone B	12	0%
Zone C	37	0%
Zone D	102	0%
Zone E	1	0%
<b>DOEA HCBS Clients</b>	596	
Lives in an Evac Zone and Has Memory Problems	23	4%
Lives in an Evac Zone and Lives Alone	67	11%

Zones are associated with the following surge heights: Zone A up to 11 feet, Zone B up to 15 feet,

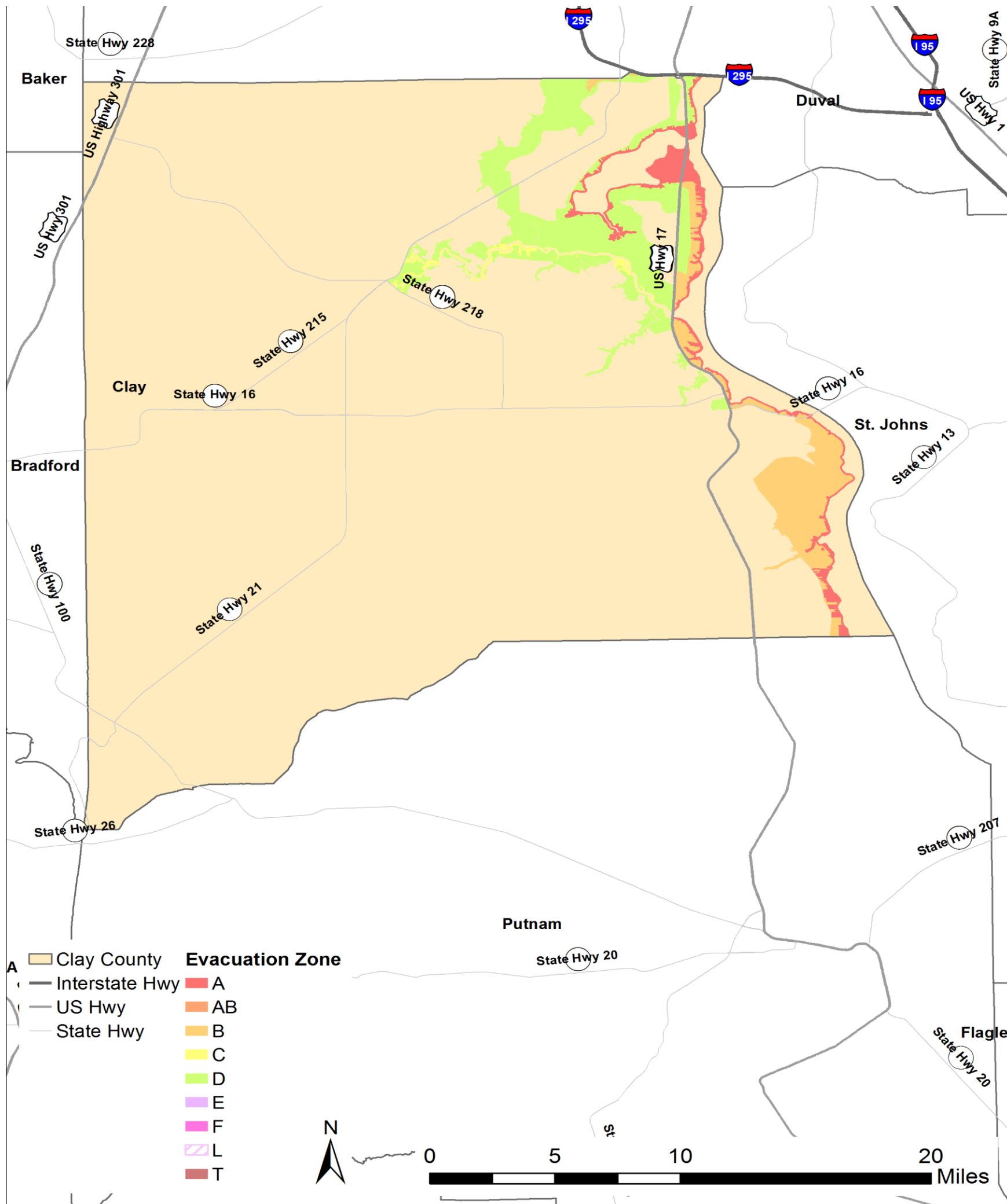
Zone C up to 20 feet, Zone D up to 28 feet, and Zone E up to 35 feet.

Source: Florida DOEA CIRTS, Florida Division of Emergency Management (FDEM), 2022

# 2023 Profile of Older Floridians

## Clay County Disaster Preparedness

### Evacuation Zones



Zones are associated with the following surge heights: Zone A up to 11 feet, Zone B up to 15 feet, Zone C up to 20 feet, Zone D up to 28 feet, and Zone E up to 35 feet.  
 Source: FDEM, 2022